

PART OF S.E. 1/4 OF SEC. 15, T. 6 N., R. 1 W., S. L. B. & M.
EDGEMONT SUBDIVISION

124

TAXING UNIT 25

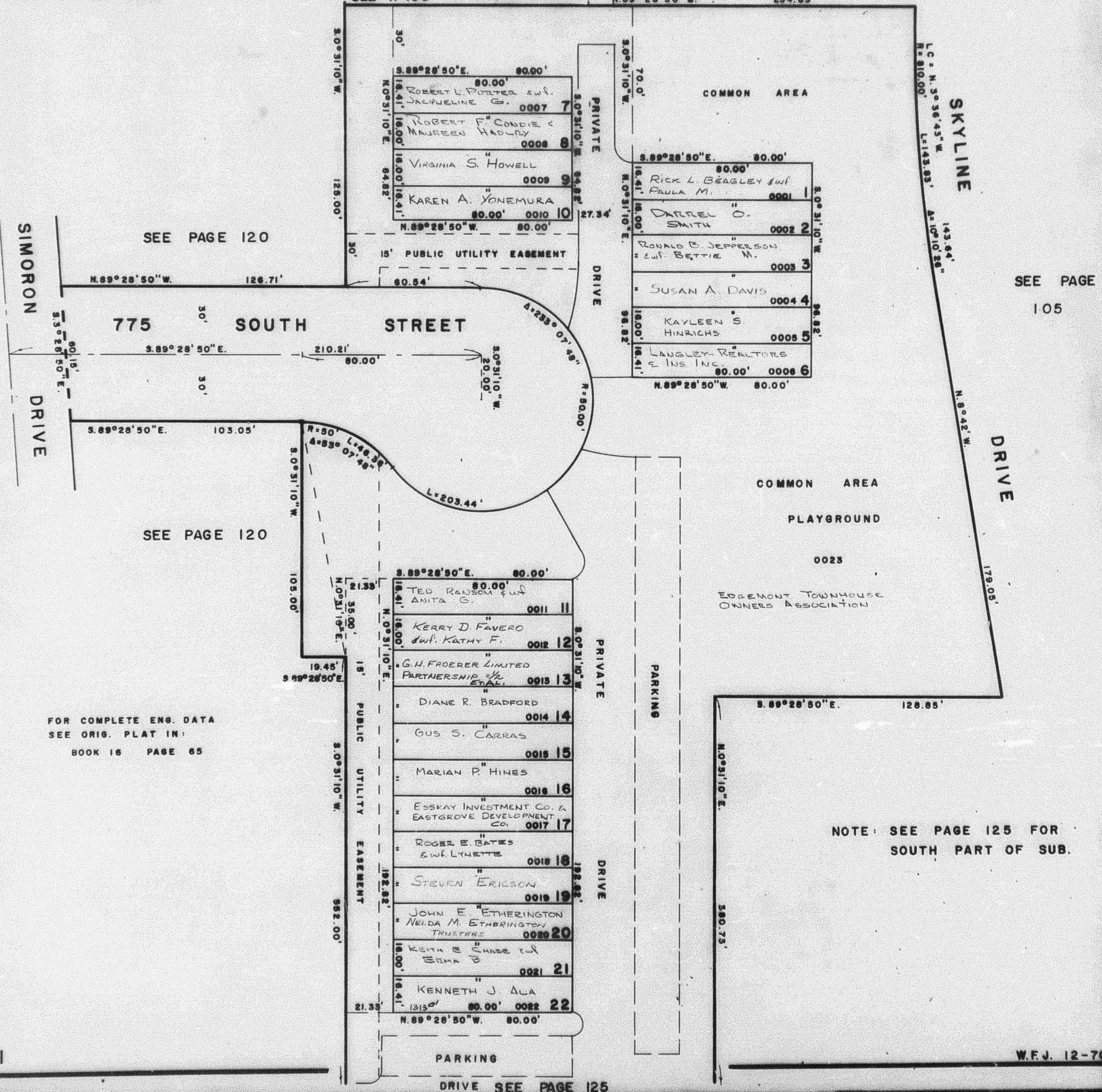
IN OGDEN CITY

SEE P. 106

SCALE 1" = 30'

LOTS 1-22

PREFIX: 11-124



SEE PAGE 120

775 SOUTH STREET

SEE PAGE 120

FOR COMPLETE ENG. DATA
 SEE ORIG. PLAT IN:
 BOOK 16 PAGE 65

SEE PAGE
 105

NOTE: SEE PAGE 125 FOR
 SOUTH PART OF SUB.

W.F.J. 12-70

PARKING DRIVE SEE PAGE 125